



MY TIMELINE



What Can I do in High School?

Take the [ACT](#) and [SAT](#)

Complete College Applications:
[The Common Application](#)
[CFNC](#) and
Individual applications.

Be aware of transcripts and transfer credit such as: Early College, AP, IB, CLEP or Transfer Credit.

Participate in extracurricular activities: Sports, jobs, clubs, organizations, volunteering, Workshops, Summer camps

What Can I do in College?

Schools require you to have at least a Bachelor's Degree to pursue a Master's in Public Health. You can [transfer](#) from a NC community college to public NC university and still get your MPH.

Picking a major does not effect your acceptance into MPH programs as long as you have the general course requirements.

Other opportunities to distinguish your application include: Shadowing, volunteering, clinical experiences, research.

What about Graduate School?

Master's of Public Health programs require you to take the [GRE](#) exam before applying to school.

[SOPHAS](#) is the application service for Public Health programs.

Applications open about one year before entering the program. The application process includes: application and in-person interviews

MPH programs are typically two years. There are four schools with MPH programs in North Carolina:

[UNC Chapel Hill](#)
[UNC Greensboro](#)
[East Carolina University](#)
[UNC Charlotte](#)

There's also a UNC Chapel Hill MPH program at MAHEC in [Asheville!](#)

PUBLIC HEALTH PROFESSIONALS...

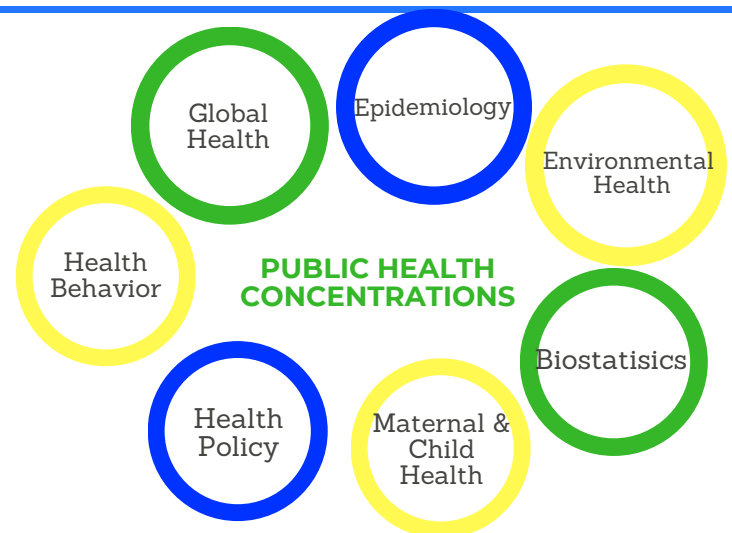
Advocate for patients in the health care system

Can get a doctorate degree

Promote health and wellness

Are needed in Western North Carolina

Can be employed in health departments, governmental settings, healthcare offices, and non-profit organizations.



MORE INFORMATION?

[Highest Paid Public Health Jobs](#)
[SOPHAS Fee Assistance](#)
[Pre-Public Health Student Resources](#)
[Learn How to Become—Public Health](#)